

Waterville

Minnock Custom Builders



- Impressive lot-just under one acre, exceptional backyard
- Four bedrooms
- 3 full baths and 1 half bath
- Elegant Owners suite on 1st floor
- Enormous walk in closet and dazzling full bath
- 10' ceilings on 1st floor and 8' doors
- 9' ceilings on 2nd floor
- Walk-in pantry
- Custom built in bookshelves and cabinets in Great room
- Gas fireplace features LED accent lighting and illuminated embers with wireless controls
- Beautiful stone hearth and mantle
- Gleaming kitchen with stainless steel appliances, 42" wall cabinets
- Copper supply lines, Moen faucets
- Two Rheem 95% efficient furnaces and two Rheem AC units
- Timbertech twin finish decking off kitchen
- Large office space, full bath and game room area on lower level can be finished to suit

**For more information call Bridget Minnock at
(C) 412.849.2762 or (O) 724.776.3686
EmeraldFieldsatPine.com**



BERKSHIRE HATHAWAY
HomeServices

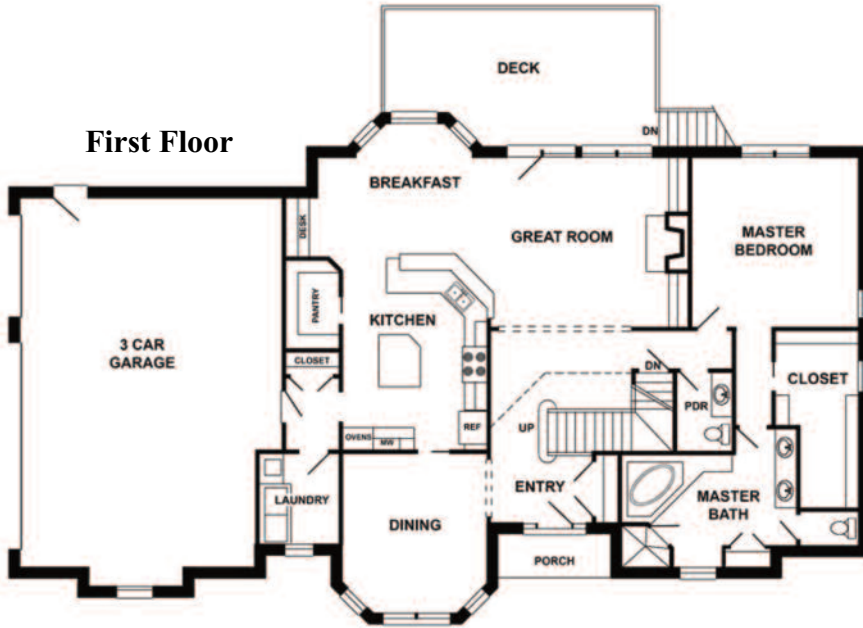
The Preferred Realty

Waterville

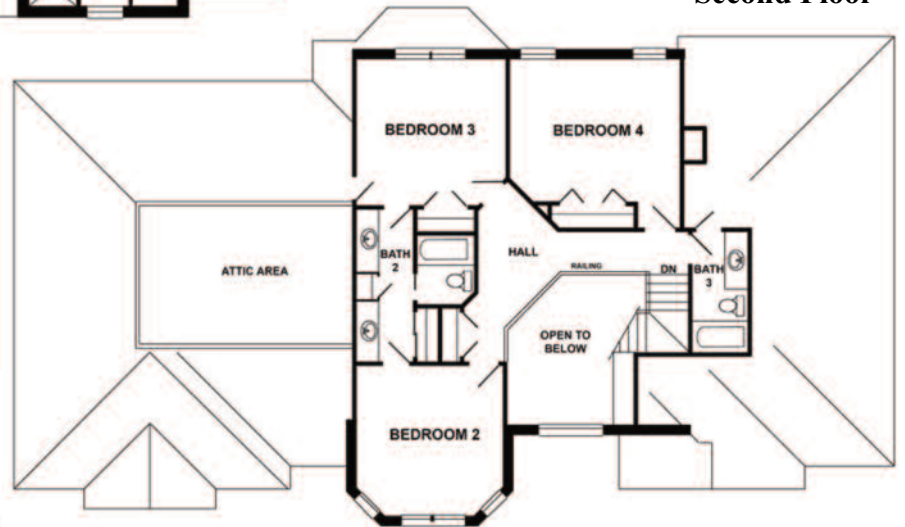
Minnock Custom Builders



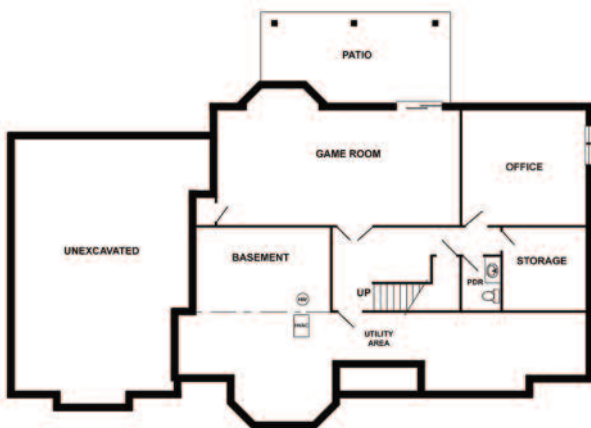
First Floor



Second Floor



Basement



For more information call Bridget Minnock at
(C) 412.849.2762 or (O) 724.776.3686
EmeraldFieldsatPine.com



BERKSHIRE HATHAWAY
HomeServices

The Preferred Realty